

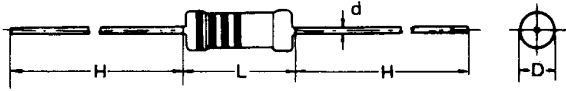


# CARBON FILM FIXED RESISTOR

## TYPES (LEAD STYLE) AND DIMENSIONS

(unit: mm)

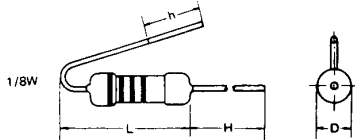
### 1. PS STYLE



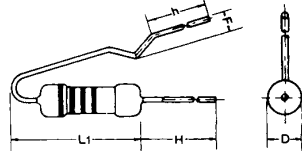
TYPE	L	D	H	d
CR12, CR16, CR25S	3.3± 0.4	1.8± 0.3	28± 2.0	0.5± 0.05
CR25, CR50S	6.5± 0.5	2.3± 0.3	28± 2.0	0.6± 0.05
CR50	9.0± 0.5	3.2± 0.5	26± 2.0	0.6± 0.05
CR100	11.5± 1.0	4.5± 0.5	35± 2.0	0.8± 0.05
CR200	15.5± 1.0	5.5± 0.5	32± 2.0	0.8± 0.05

### 2. PF STYLE

For types:  
CR12, 16, 25S

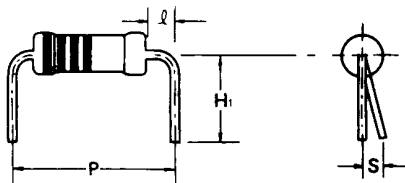


For types:  
CR25, 50S, 50



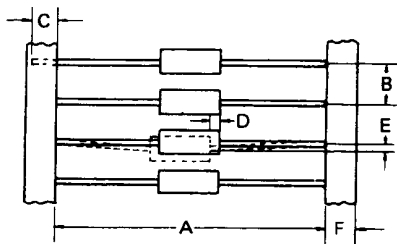
TYPE	L1	H	h	F
CR12, CR16, CR25S	4.5± 0.5	28± 2.0	22± 1.0	—
CR25, CR50S	9.5± 1.0	28± 2.0	16± 2.0	1.8± 0.5
CR50	12.5± 1.0	28± 2.0	12± 2.0	1.8± 0.5

### 3. PM STYLE



TYPE	P	H1	I	S
CR12, CR16, CR25S	5.0± 0.5	6± 1.0	0.5± 0.3	Max. 1.7
CR25, CR50S	10.0± 0.5	6± 1.0	2.5± 0.5	Max. 1.7
	12.5± 0.5			
CR50	12.5± 1.0	7± 1.0	2.5± 0.5	Max. 2.0
	17.5± 1.0		2.5± 0.5	

## TAPING DIMENSIONS



TAPING SPACING	RESISTOR SPACE	LEAD IN TAPE	COMPONENT ALIGNMENT		TAPE WIDTH
A *	B	C	D	E	F
52± 1.0	5± 0.5	3 min.	0.8 MAX	1.2 MAX	6± 1.0

\* A=26 also available for Pana-sert