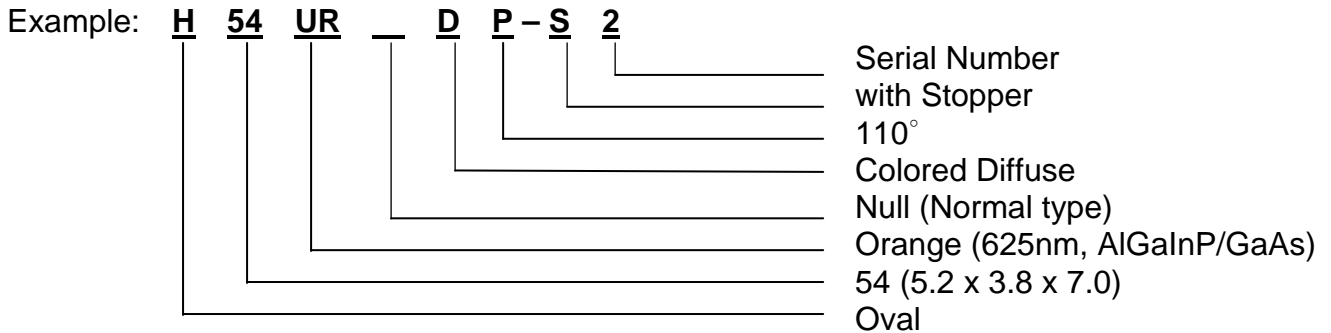




PART NUMBER DESCRIPTION (for order booking)

Shape (1)	Dimension (2)	Lighting Color (3)	Differentiate (4)	Lens Color (5)	View Angle (6)	Stopper (7)	Serial No. (8)
--------------	------------------	-----------------------	----------------------	-------------------	-------------------	----------------	-------------------



(1) Shape

- | | | |
|-------------------------------|----------------------------------|-------------------------------|
| A: Round without Plane | F: Coniform | R: Round with Plane |
| B: Bullet shape | H: Oval | S: Quadrate with Plane |
| C: Columniation form | N: Vaulted shape | U: Umbrella |
| D: Hat shape | Q: Quadrate without Plane | V: Concave |

(2) Dimension

Round

- 03** – ϕ 3mm
- 05** – ϕ 5mm
- 08** – ϕ 8mm
- 10** – ϕ 10mm

Oval

- | | |
|-----------------------------|-----------------------------|
| 34 – 3.9 x 3.1 x 6.1 | 52 – 5.0 x 4.2 x 7.0 |
| 35 – 3.9 x 3.1 x 6.1 | 54 – 5.2 x 3.8 x 7.0 |
| 42 – 4.2 x 3.3 x 6.5 | 63 – 4.7 x 5.7 x 7.9 |
| 43 – 4.2 x 3.4 x 6.4 | 66 – 5.2 x 4.6 x 7.8 |
| 46 – 4.6 x 5.8 x 7.1 | |
| 47 – 4.7 x 5.7 x 7.8 | |

(3) Lighting Color

Color	Wd (nm)	Chip	Color	Wd (nm)	Chip
YG – Yellow Green	570	GaP/Gap	DR -- Deep Red	640	AlGaAs/GaAs
UG – Yellow Green	573	AlGaInP/GaAs	SR – Deep Red	640	AlGaAs/GaAs-1
AY -- Yellow	590	AlGaInP/Si	B – Blue	470	InGaN
TY -- Yellow	590	AlGaInP/GaP	CB – Blue	430	InGaN
UY -- Yellow	590	AlGaInP/GaAs	F – Pure Green	525	InGaN
UO -- Amber	605	AlGaInP/GaAs	H – Bluish Green	505	InGaN
AR -- Orange	625	AlGaInP/Si	TG – True Green	510	InGaN
ER -- Orange	625	AlGaInP/GaAs	W -- White	0.30/0.30	InGaN
LR -- Orange	630	AlGaInP/GaAs			
TR -- Orange	625	AlGaInP/GaP			
UR -- Orange	625	AlGaInP/GaAs			



PART NUMBER DESCRIPTION (for order booking)

(4) Differentiate

Null – Normal

1 – Special 1

2 – Special 2

...

(5) Lens Color

C – Water Clear

D – Colored Diffuse

T – Colored Clear

W – White

(6) View Angle

A – 8°	E – 30°	K – 70°	P -- 110°
B -- 15°	F – 43°	L – 80°	Q -- 120°
C -- 20°	G – 50°	M – 90°	R -- 130°
D -- 23°	H -- 60°	N -- 100°	X -- 10°

(7) Stopper

S – with stopper

Null – Without stopper

(8) Serial Number

1, 2, 3, ...