



ALUMINUM ELECTROLYTIC CAPACITOR

AXIAL LEADS TAPE AND REEL

TAPING SPECIFICATIONS:

This specification covers taped axial leads electrolytic capacitors with body diameters of 5, 6, 8 or 10 mm

1. Body tape requirements are shown in Fig. 1.
2. Polarity of capacitors shall be oriented in one direction.
3. Tape color shall be white for anode, red (or blue) for cathode.
4. Leader tape shall be provided over 200mm before the first and after the last capacitor on tape. (see Fig. 2)
5. No more than 3 capacitors shall be missing consecutively.
6. A maximum of one capacitor of consecutive 6 capacitors or 1% of one package may be missing.
7. Cumulative pitch tolerance "P" shall not exceed 1.5mm over six consecutive capacitors.

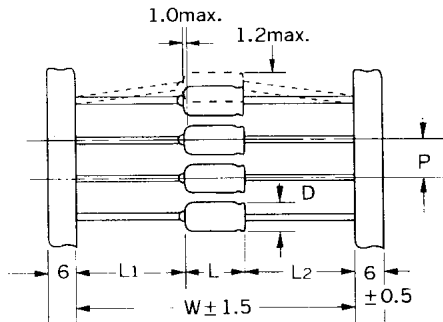


Fig. 1

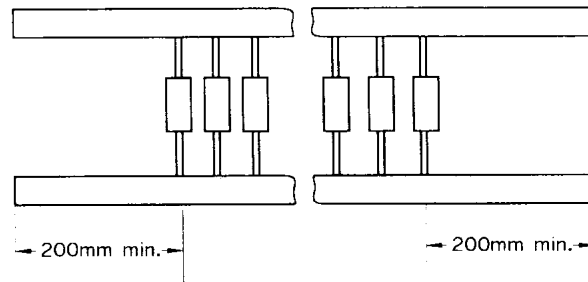
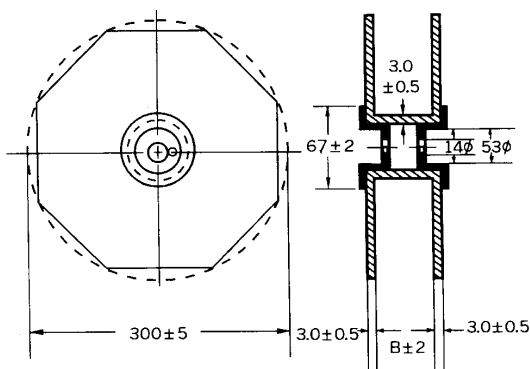


Fig.2

Reel Packaging (TR)



Dimensions in mm

D $\phi \pm 0.5$	L+1.0 max.	P+0.5	L1- L2 Max.
5	12	10	1.5
6	12	10	1.5
6	16	10	1.5
8	16	10	1.5
8	20	10	1.5
10	20	15	1.5

W: inside distance between tapes	52	63	73
B: inside distance between flanges	70	82	92

Standard quantity per Reel:
 1,250 pcs for D=5 or D=6
 1,000 pcs for D=8
 500 pcs for D=10