



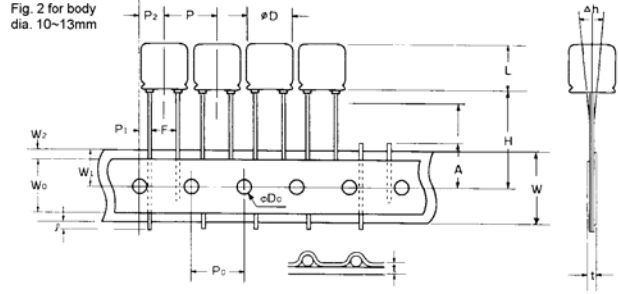
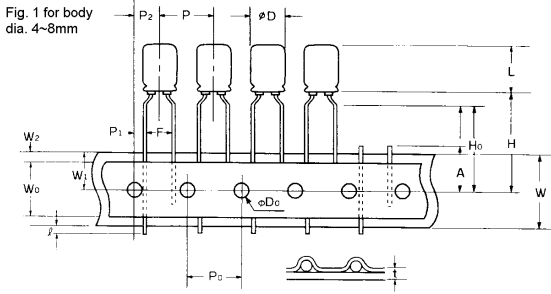
# ALUMINUM ELECTROLYTIC CAPACITOR

## RADIAL LEADS TAPE AND REEL

### TAPING SPECIFICATIONS

This specification covers taped single ended electrolytic capacitors with body diameters of 4, 5, 6, 8, 10 or 13 mm

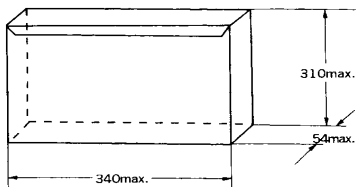
1. Polarity of capacitors shall be oriented in one direction.
2. Up to 3 capacitors consecutively missing on tape is permitted, but a designated quantity of capacitors shall be packed in each case.
3. Removal of faulty capacitors from the tape shall be by pulling out or by cutting off leads. Cut off leads remaining on tape shall not protrude more than 2mm max. from tape edge.



### DIMENSIONS (mm):

ITEM	SYMBOL	BODY DIA.				TOLERANCE
		4, 5, 6.3MM	8MM	10 MM	13MM	
Body Height	L	12.5	17.0	17.0	21.5, 26.5, 31.5	max.
Pitch of component	P	12.7	12.7	12.7	15.0	±1.0
Feed hole pitch	Po	12.7	12.7	12.7	15.0	±0.3
Hole center to lead	P1	3.85	3.85	3.85	5.0	±0.7
Feed hole center to component center	P2	6.35	6.35	6.35	7.5	±1.0
Lead to lead distance	F	5.0	5.0	5.0	5.0	±0.8
Tape width	W	18.0	18.0	18.0	18.0	±0.3
Hold-down tape width	W0	12.5	12.5	12.5	15.0	min
Feed hole position	W1	9.0	9.0	9.0	9.0	±0.5
Hold-down tape position	W2	3.0	3.0	3.0	3.0	max.
Height of component from tape center	H	18.5	18.5	18.5	18.5	±0.75
Lead crimp height	Ho	16.0	16.0	--	--	±0.5
Lead protrusion	l	2.0	2.0	2.0	2.0	max.
Feed hole diameter	φ Do	4.0	4.0	4.0	4.0	±0.3
Component alignment, F-R	Δ h	0	0	0	0	±2.0
Total tape thickness	t	0.7	0.7	0.7	0.7	±0.2
Length of snipped lead	A	11.0	11.0	11.0	11.0	Max.

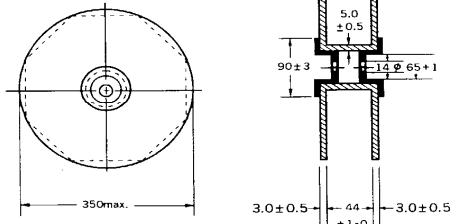
### AMMUNITION (BOX) PACKAGING (TB)



Standard quantity per Box:

- 2,500 pcs for D=4
- 2,000 pcs for D=5 or D=6
- 1,000 pcs for D=8
- 750 pcs for D=10
- 500 pcs for D=13

### REEL PACKAGING (TR)



Standard quantity per Reel:

- 1,700 pcs for D=4
- 1,300 pcs for D=5
- 1,000 pcs for D=6
- 750 pcs for D=8