

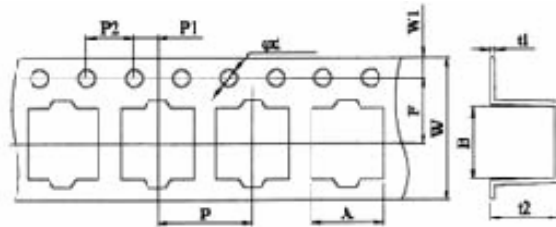


ALUMINUM ELECTROLYTIC CAPACITOR

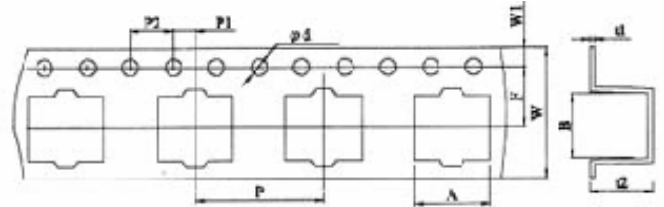
TAPING SPECIFICATION FOR SURFACE MOUNT TYPE

1. Carrier Tape

(Fig. 1-1)



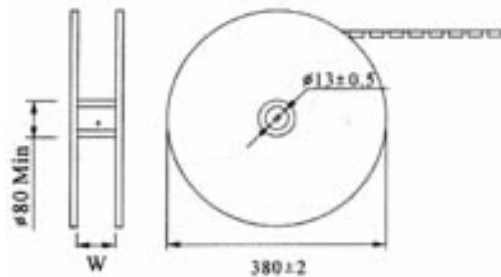
(Fig. 1-2)



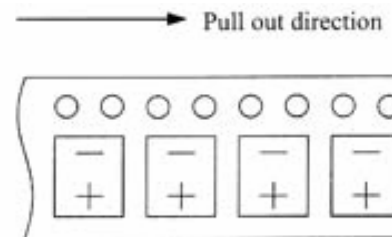
Unit: mm

D φ x L	A	B	D φ	F	P	P1	P2	t1	t2	W	W1	Fig. #
4 x 5.3	5.0	5.0	1.5	5.5	8	2.0	4.0	0.4	5.8	12.0	1.75	1-1
5 x 5.3	6.0	6.0	1.5	5.5	12	2.0	4.0	0.4	5.8	12.0	1.75	1-1
6.3 x 5.3	7.0	7.0	1.5	7.5	12	2.0	4.0	0.4	5.8	16.0	1.75	1-2
6.3 x 7.7	7.0	7.0	1.5	7.5	12	2.0	4.0	0.4	8.3	16.0	1.75	1-2
8 x 6.5	8.7	8.7	1.5	7.5	12	2.0	4.0	0.4	6.8	16.0	1.75	1-2
8 x 10	8.7	8.7	1.5	11.5	16	2.0	4.0	0.4	11	24.0	1.75	1-2
10 x 10	10.7	10.7	1.5	11.5	16	2.0	4.0	0.4	11	24.0	1.75	1-2
Tol.	±0.2	±0.2	+1/-0	±0.1	±0.1	±0.1	±0.1	±0.1	±0.2	±0.3	±0.15	

2. Reel Packaging Dimension



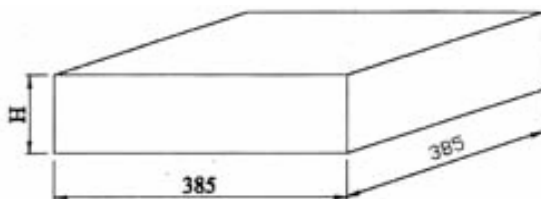
Polarity



Unit: mm

D φ x L	4~5 x 5.3	6.3 x 5.3~7.7	8 x 6.5~10	10 x 10
W	14	18	18	26

3. Box Packing specification



Unit: mm

D φ x L	4~5 x 5.3	6.3 x 5.3~7.7	8 x 6.5~10	10 x 10
H	105	125	125	180

Packing quantities

D φ x L	Pcs/Reel	Pcs/Box
4x 5.3	2,000	10,000
5~6.3 x 5.3	1,000	5,000
6.3 x 7.7	1,000	5,000
8 x 6.5	1,000	5,000
8 x 10	500	2,000
10 x 10	500	2,000